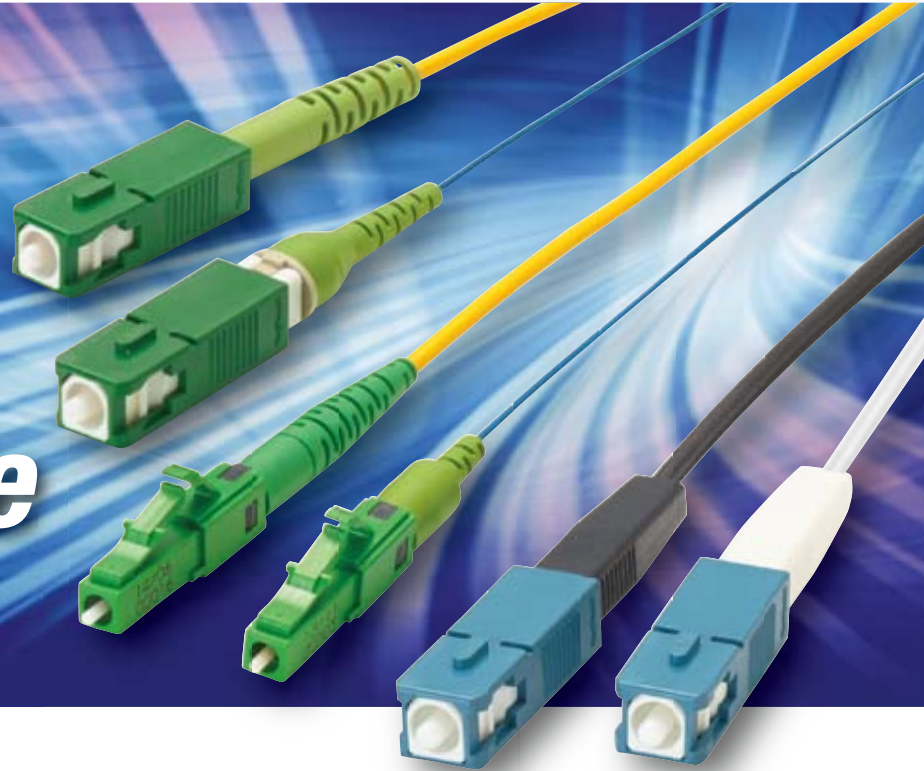


## *Fusion-spliced, field-terminated connector for FTTX*

***Simple &  
Field  
Installable***



# ***FuseConnect™***



- Connectorization in :
  - RF-overlay FTTP networks
  - Outside plant
  - Cable TV backbone networks
  - MDU FTTP cabling
- Central office connector replacement
- Data center installation

*Single Fiber Fusion Splicer*

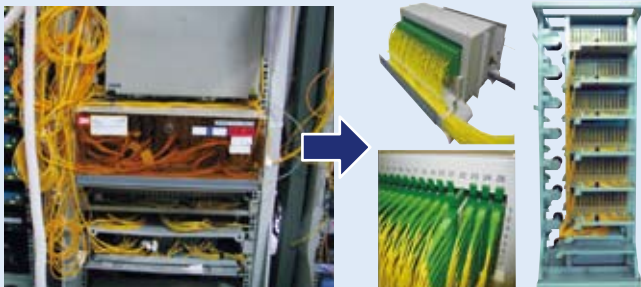
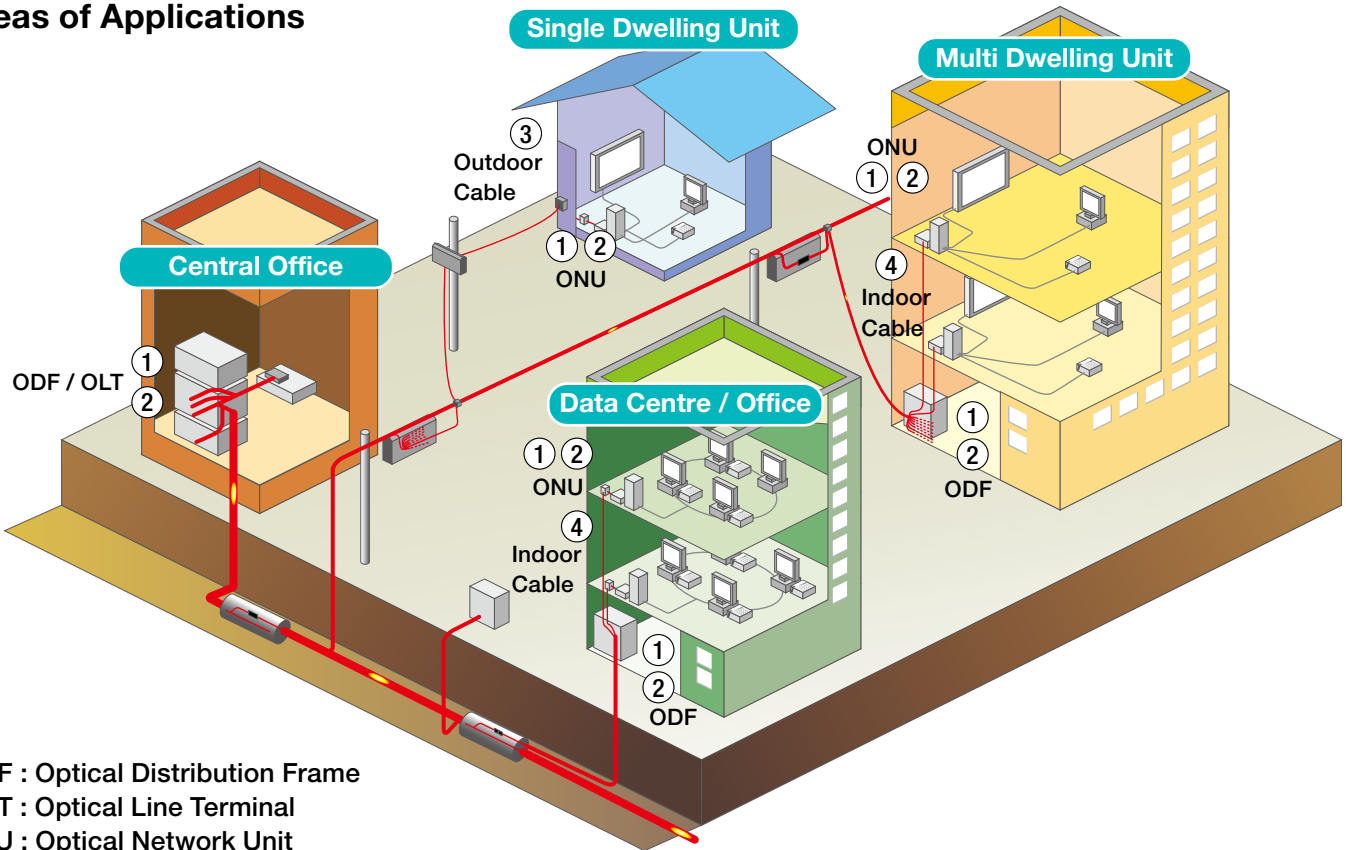
## ***Fujikura 12S***

- World's smallest and lightest
- Excellent for FTTX
- Superior mobility for aerial / confined space

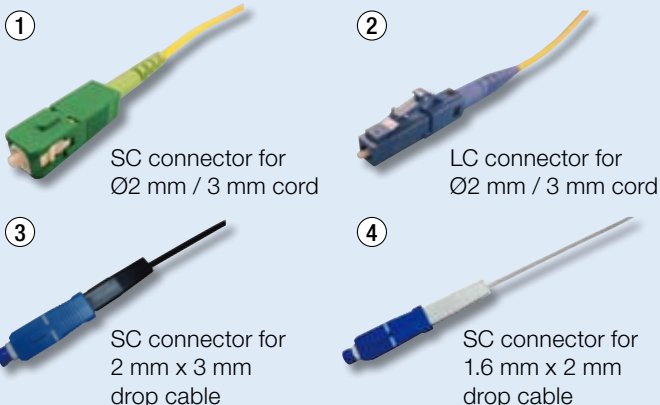
# FuseConnect™ with 12S Package

Fujikura's FuseConnect™ connectors and 12S package offers a dynamic range of solutions to various fiber termination and FTTX applications from central office to single / multi dwelling unit.

## Areas of Applications



### Applicable Connectors for

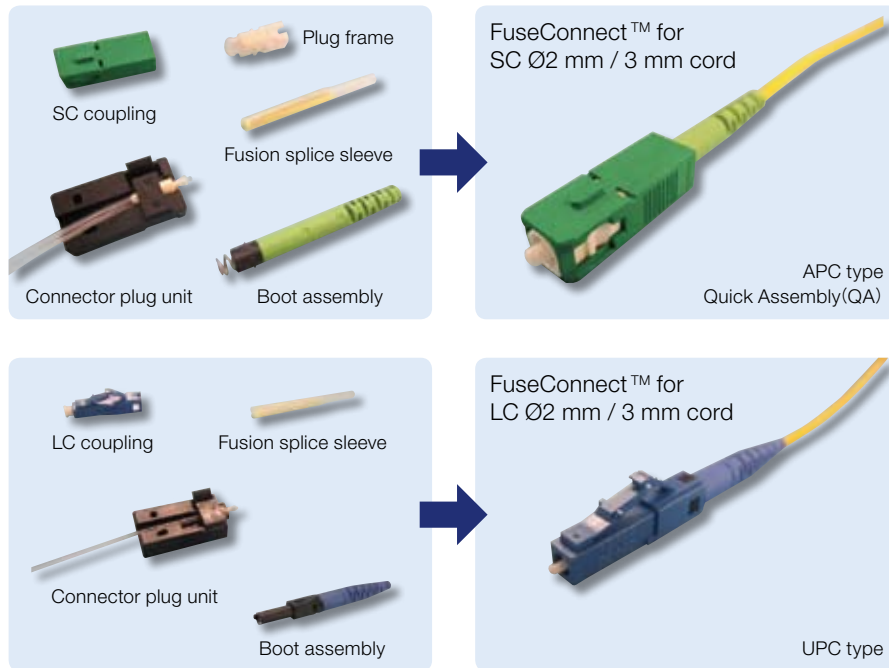


### Advantages

- **Performance**
  - Simple, fast and accurate with fusion splicing
- **Fiber management**
  - Eliminates excess cable in ODF
  - No need for splice tray and protection sleeves
  - Easy maintenance
- **Cost savings**
  - Reduce maintenance cost

# FuseConnect™

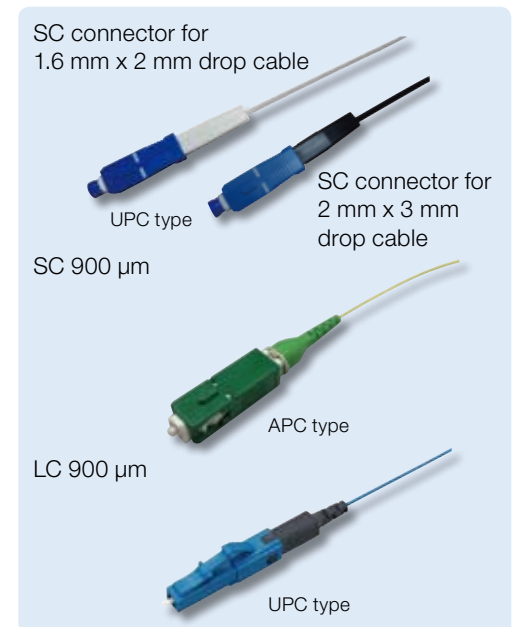
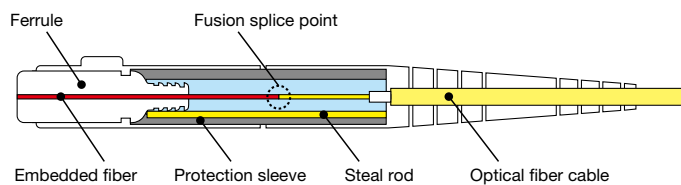
Fujikura's FuseConnect™ with factory pre-polished ferrule, utilizes fusion splicer to terminate the connector in the field. This eliminates polishing, adhesives and crimping in the field, which minimizes the potential for operator error and expensive connector scrap. Fusion splice addresses return loss concerns present in analog optical networks. This advanced process yields true APC performance for SC / APC and LC / APC configuration. The innovative design and simplified field installation makes the FuseConnect™ the ideal choice for various fiber termination and FTTX applications.



## Features

- Field installable
- No adhesives, crimping or polishing
- True APC performance
- MM compliant to TIA / EIA568C.3
- Compatible with Fujikura and most other fusion splicers

## Interior Structure



## Specification

Item	Content
Applicable fiber type	900 μm, 2 mm, 3 mm, 1.6 mm x 2 mm drop cable, 2 mm x 3 mm drop cable
Connector type	SC or LC
Polishing	UPC or APC or PC (MM)
Connection loss (with master)	< 0.3 dB (Singlemode)
	< 0.3 dB (Multimode)
Return loss	> 65 dB (SM fiber APC polish)
	> 55 dB (SM fiber PC polish)
	> 30 dB (MM UPC polish)
Operating temperature	-40°C to 75°C

## Ordering Information (SC, LC) (900 um fiber, Ø2 mm cord, Ø3 mm cord)

Type	SC 900 um fiber	SC 2 mm cord / SC 3 mm cord	LC 900 um fiber	LC 2 mm cord	LC 3 mm cord
SM UPC Polish	FuseConnect-SC-SF-SM-09	FuseConnect-SC-QA-SM-20/30	FuseConnect-LC-SF-SM-09	FuseConnect-LC-QA-SM-20	FuseConnect-LC-SF-SM-30
SM APC Polish	FuseConnect-SC-SF-APC-09	FuseConnect-SC-QA-APC-20/30	FuseConnect-LC-SF-APC-09	FuseConnect-LC-QA-APC-20	FuseConnect-LC-SF-APC-30
MM (50) PC Polish	FuseConnect-SC-SF-GI5-09	FuseConnect-SC-QA-GI5-20/30	FuseConnect-LC-SF-GI5-09	FuseConnect-LC-QA-GI5-20	FuseConnect-LC-SF-GI5-30
MM (62.5) PC Polish	FuseConnect-SC-SF-GI6-09	FuseConnect-SC-QA-GI6-20/30	FuseConnect-LC-SF-GI6-09	FuseConnect-LC-QA-GI6-20	FuseConnect-LC-SF-GI6-30
MM50 10G PC Polish	FuseConnect-SC-SF-10G-09	FuseConnect-SC-QA-10G-20/30	FuseConnect-LC-SF-10G-09	FuseConnect-LC-QA-10G-20	FuseConnect-LC-SF-10G-30

## Ordering Information (SC) (2 mm x 3 mm drop cable, 1.6 mm x 2 mm drop cable)

Type	SC connector for 2 mm x 3 mm drop cable	SC connector for 1.6 mm x 2 mm drop cable
SM UPC Polish	FuseConnect-SC-DC	FuseConnect-SC-LFC
SM APC Polish	FuseConnect-SC-APC-DC	FuseConnect-SC-APC-LFC

# Fujikura 12S

Being the world's smallest and lightest fusion splicer, Fujikura 12S offers the versatility for splicing in challenging situations such as aerial and confined space. Utilizing Fujikura's FuseConnect™, the 12S offers the ideal splicing solution for any fiber termination and FTTX application.

## Specifications

<b>Applicable fibers</b>	Single / SMF (G.652/657), MMF (G.651), DSF (G.653), NZDSF (G.655)
<b>Cladding dia. / Sheath dia.</b>	125 µm / 160 µm to 3 mm by fiber holder system
<b>Cleave length</b>	5 mm to 13 mm
<b>Splice mode / Heating mode</b>	Total 100 splice modes / 30 heating modes
<b>Typical splice loss</b>	0.05 dB (SM), 0.02 dB (MM), 0.08 dB (DS) and 0.08 dB (NZDS) Measured by cut-back method relevant to ITU-T and IEC standards
<b>Splice time / Tube heating time</b>	Typical 15 sec with SM / Typical 30 sec with FP-03 (60 mm)
<b>No. of splice / Heating per full charge battery*1</b>	100 cycles
<b>Splice result storage</b>	2000 splices
<b>Electrode life</b>	3000 splices
<b>Size / Weight</b>	121W × 162D × 57H mm / 776 g (including battery)
<b>Operating condition</b>	Altitude : 0 to 3660 m above sea level. Wind : 15 m / sec Temp. : -10°C to 50°C. Humidity : 0 to 95% RH, non-dew.
<b>Resistance test**2</b>	Shock : 76 cm bottom surface drop Dust : 0.1 to 500 µm dia. Alumina Silicate Rain : H = 10 mm / hr for 10 min

\*1 Based on 2 min splice / heating cycle under room temperature and condition

\*2 Carried out in Fujikura labs in Japan. Tests do not guarantee product will not be damaged under these conditions

## Standard Package

Description	Model No.	Q'ty
<b>Fusion splicer</b>	12S with BTR-10 and ELCT2-12	1pc
<b>Fiber holder</b>	FH-60-XXX (XXX : see fiber holder options)	2pairs
<b>AC adapter</b>	ADC-19	1pc
<b>AC power cord</b>	ACC-XX XX = 08(JP), 09(US), 10(UK), 11(EU), 12(AU)	1pc
<b>Carrying case</b>	CC-29	1pc
<b>Spare electrodes</b>	ELCT2-12	1pair
<b>Instruction manual CD</b>	M-12	1pc
<b>Quick reference guide</b>	Q-12S-E	1pc
<b>Alcohol pot</b>	AP-01	1pc
<b>Screw driver</b>	SD-01	1pc

## Optional Items

Description	Model No.
<b>Fiber holder options</b>	FH-60-250 (coating dia. of 250 µm)
	FH-60-900 (coating dia. of 900 µm)
	FH-60-DC250 (2 mm × 3 mm drop cable)
	FH-60-IDC250 (1.6 mm × 2 mm drop cable)
	FH-FC-20 (coating dia. of 900 µm in Ø2 mm cord)
	FH-FC-30 (coating dia. of 900 µm in Ø3 mm cord)
<b>Battery pack</b>	BTR-10
<b>Electrodes</b>	ELCT2-12
<b>Transfer clamp</b>	CLAMP-DC (for drop cable)

## Accessories

Description	Model No.
<b>High precision single fiber cleaver</b>	CT-06
<b>High precision fiber cleaver</b>	CT-30 (for single to 12 ribbon fibers)
<b>Primary coat stripper</b>	PS-02
<b>Nylon jacket stripper</b>	JS-01
<b>Protection sleeves</b>	FP-03 / 03 (L = 40) and FPS-01 series
<b>Jacket split tool</b>	FUSE-ST

## Optional Items



Fiberholders



Transfer clamp (CLAMP-DC)

## Other Preparation Tools



Cable Clamp  
(For Ø2 mm / 3 mm sheath cord)

Jacket stripper\*3

Nipper\*3  
(For drop cable)

Kevlar Cutter\*3  
(For Ø2 mm / 3 mm sheath cord)

\*3 Not sold by Fujikura.

Specifications and descriptions are subject to change without prior notice.

<b>überreicht durch:</b>	<b>Opternus GmbH</b> Optische Spleiss- & Messtechnik	<b>Büro Süd:</b>
<b>Opternus</b>	Bahnhofstr. 5 D-22941 Bargteheide	Tel. +49(0)4532-20 44-0 Fax +49(0)4532-20 44-25
	E-Mail: <a href="mailto:info@opternus.de">info@opternus.de</a> - <a href="http://www.opternus.de">www.opternus.de</a> - <a href="http://www.opternus-shop.de">www.opternus-shop.de</a>	Katharinenstr. 57 D-73728 Esslingen Tel. +49(0)711-3 10 59 99-0 Fax +49(0)711-3 10 59 99-99