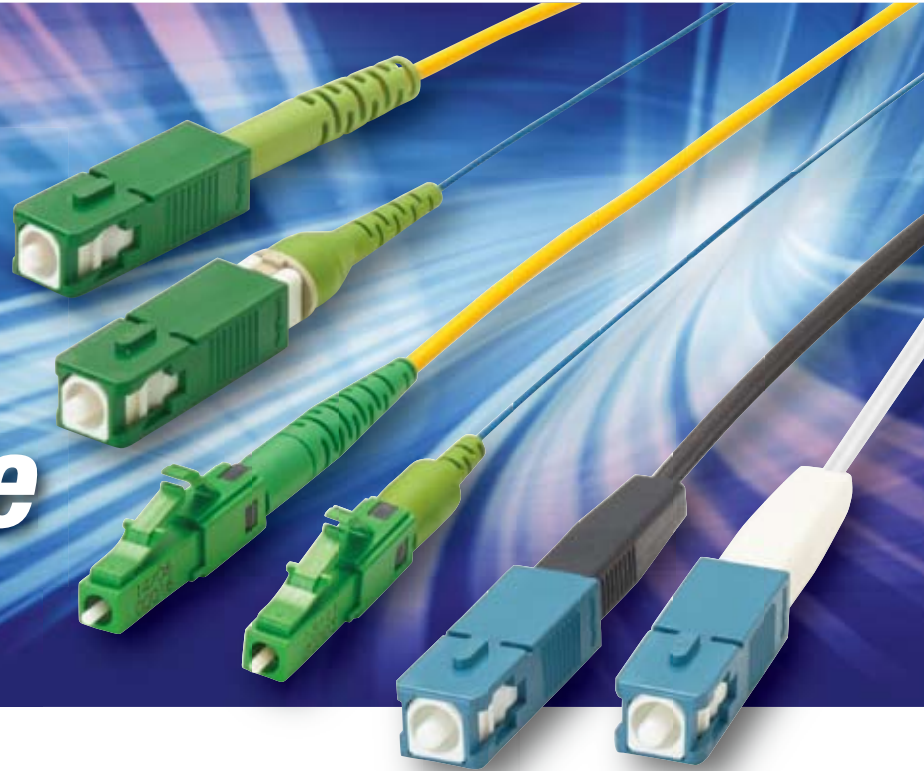
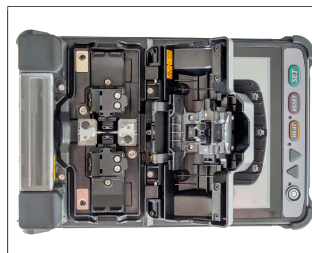
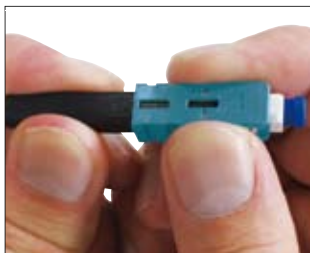


Fusion-spliced, field-terminated connector for FTTX

**Simple &
Field
Installable**



FuseConnect™



- Connectorization in :
 - RF-overlay FTTP networks
 - Outside plant
 - Cable TV backbone networks
 - MDU FTTP cabling
- Central office connector replacement
- Data center installation

Single Fiber Fusion Splicer

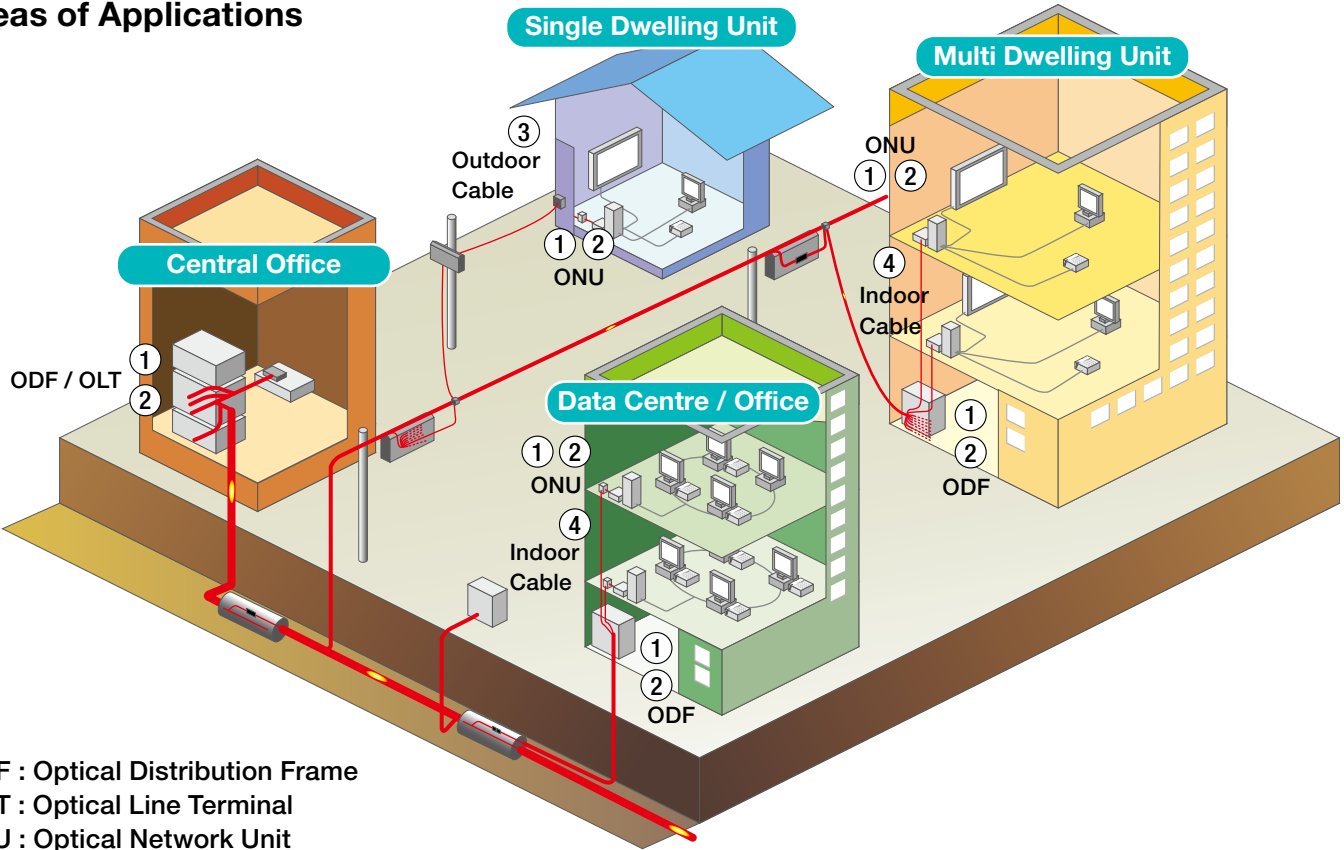
Fujikura 41S

- Small, robust and very light
- Excellent for FTTX (3-axes)
- Superior mobility for aerial / confined space

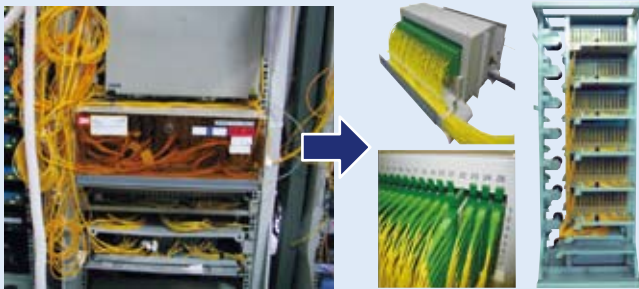
FuseConnect™

Fujikura's FuseConnect™ connectors and 41S package offers a dynamic range of solutions to various fiber termination and FTTX applications from central office to single / multi dwelling unit.

Areas of Applications



ODF : Optical Distribution Frame
 OLT : Optical Line Terminal
 ONU : Optical Network Unit



Eliminates excess cable in ODF

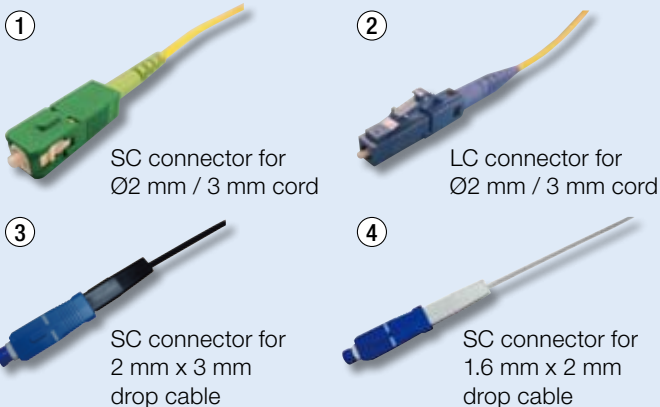


Splicing in ODF



Splicing aerial drop cable

Applicable Connectors for

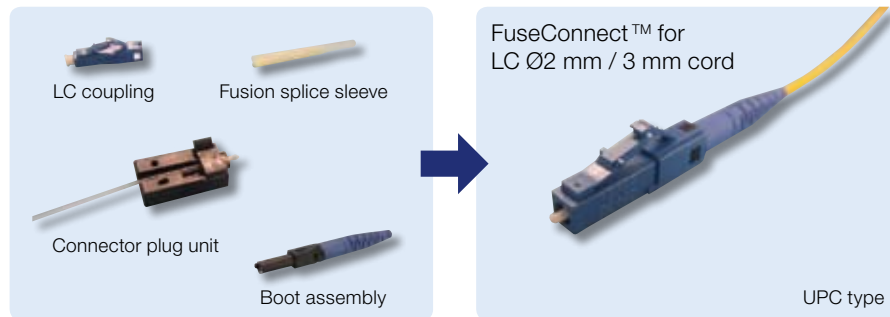
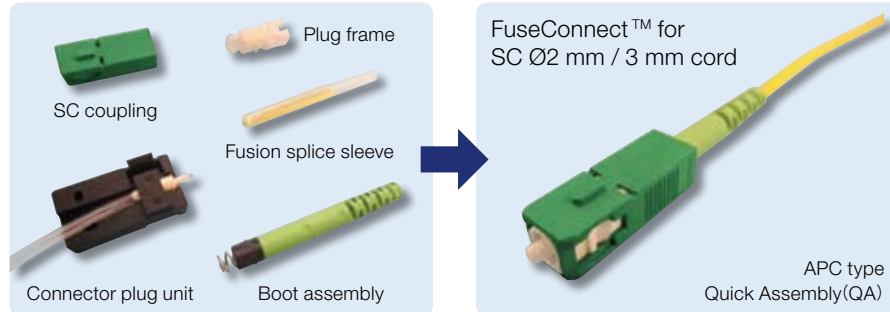


Advantages

- **Performance**
 - Simple, fast and accurate with fusion splicing
- **Fiber management**
 - Eliminates excess cable in ODF
 - No need for splice tray and protection sleeves
 - Easy maintenance
- **Cost savings**
 - Reduce maintenance cost

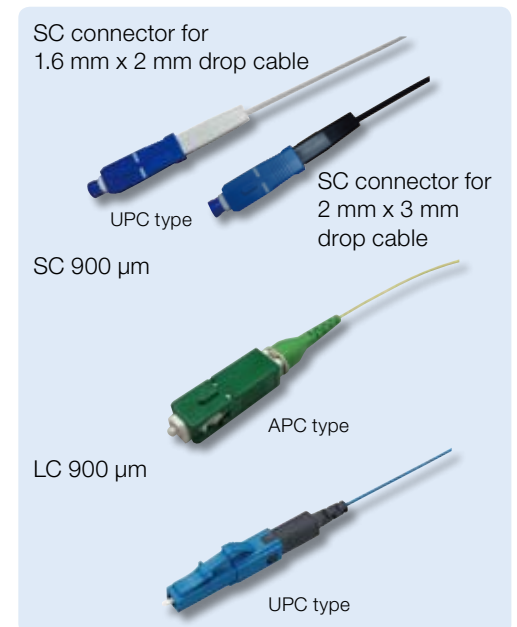
FuseConnect™

Fujikura's FuseConnect™ with factory pre-polished ferrule, utilizes fusion splicer to terminate the connector in the field. This eliminates polishing, adhesives and crimping in the field, which minimizes the potential for operator error and expensive connector scrap. Fusion splice addresses return loss concerns present in analog optical networks. This advanced process yields true APC performance for SC / APC and LC / APC configuration. The innovative design and simplified field installation makes the FuseConnect™ the ideal choice for various fiber termination and FTTX applications.

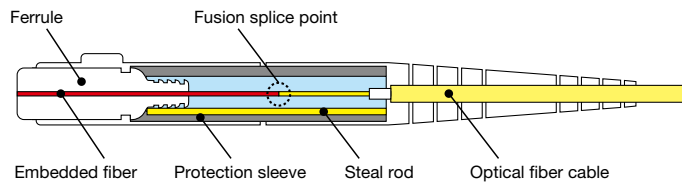


Features

- Field installable
- No adhesives, crimping or polishing
- True APC performance
- MM compliant to TIA / EIA568C.3
- Compatible with Fujikura and most other fusion splicers



Interior Structure



Specification

Item	Content
Applicable fiber type	900 µm, 2 mm, 3 mm, 1.6 mm x 2 mm drop cable, 2 mm x 3 mm drop cable
Connector type	SC or LC
Polishing	UPC or APC or PC (MM)
Connection loss (with master)	< 0.3 dB (Singlemode)
	< 0.3 dB (Multimode)
Return loss	> 65 dB (SM fiber APC polish)
	> 55 dB (SM fiber PC polish)
	> 30 dB (MM UPC polish)
Operating temperature	-40°C to 75°C

Ordering Information (SC, LC) (900 um fiber, Ø2 mm cord, Ø3 mm cord)

Type	SC 900 um fiber	SC 2 mm cord / SC 3 mm cord	LC 900 um fiber	LC 2 mm cord	LC 3 mm cord
SM UPC Polish	FuseConnect-SC-SF-SM-09	FuseConnect-SC-QA-SM-20/30	FuseConnect-LC-SF-SM-09	FuseConnect-LC-QA-SM-20	FuseConnect-LC-SF-SM-30
SM APC Polish	FuseConnect-SC-SF-APC-09	FuseConnect-SC-QA-APC-20/30	FuseConnect-LC-SF-APC-09	FuseConnect-LC-QA-APC-20	FuseConnect-LC-SF-APC-30
MM (50) PC Polish	FuseConnect-SC-SF-GI5-09	FuseConnect-SC-QA-GI5-20/30	FuseConnect-LC-SF-GI5-09	FuseConnect-LC-QA-GI5-20	FuseConnect-LC-SF-GI5-30
MM (62.5) PC Polish	FuseConnect-SC-SF-GI6-09	FuseConnect-SC-QA-GI6-20/30	FuseConnect-LC-SF-GI6-09	FuseConnect-LC-QA-GI6-20	FuseConnect-LC-SF-GI6-30
MM50 10G PC Polish	FuseConnect-SC-SF-10G-09	FuseConnect-SC-QA-10G-20/30	FuseConnect-LC-SF-10G-09	FuseConnect-LC-QA-10G-20	FuseConnect-LC-SF-10G-30

Ordering Information (SC) (2 mm x 3 mm drop cable, 1.6 mm x 2 mm drop cable)

Type	SC connector for 2 mm x 3 mm drop cable	SC connector for 1.6 mm x 2 mm drop cable
SM UPC Polish	FuseConnect-SC-DC	FuseConnect-SC-LFC
SM APC Polish	FuseConnect-SC-APC-DC	FuseConnect-SC-APC-LFC