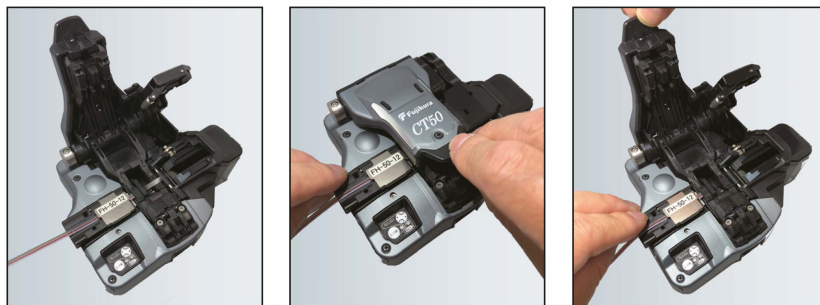


The most robust cleaver



Fiber Cleaver

Fujikura CT50



- **Applicable for up to 12-fiber cleaving**
- **Automatic cleaving blade rotation via wireless communication**
- **User replaceable fiber clamps**
- **Blade life up to 60,000 cleaves**
- **Wide lever opening angle allows easy fiber placement**
- **Single-action operation including fiber scrap collection**

Specifications and descriptions are subject to change without prior notice.

überreicht durch:
Opternus

Opternus GmbH Optische Spleiss- & Messtechnik
Bahnhofstr. 5
D-22941 Bargtheide

Tel. +49(0)4532-20 44-0
Fax +49(0)4532-20 44-25

Büro Süd:
Katharinenstr. 57
D-73728 Esslingen

Tel. +49(0)711-3 10 59 99-0
Fax +49(0)711-3 10 59 99-99

E-Mail: info@opternus.de - www.opternus.de - www.opternus-shop.de

Fujikura CT50

SPECIFICATIONS

Description	CT50	
Applicable optical fiber	Silica optical fiber	
Fiber count	Up to 12	
Cladding diameter	125 μm	
Coating diameter	160 to 900μm 2 to 3mm cord and drop cable	
Cleaving length	AD-50	5mm to 20mm (coating diameter =250μm) 10mm to 20mm (coating diameter > 250μm)
	Fiber holder	10mm (from the edge of FH:13mm)
Cleaving angle	Typical 0.5 degrees	
Blade life	60,000 fibers (1,250 fibers x 3 heights x 16 positions)	
Wireless connectivity	Bluetooth 4.1 LE*1	
Power supply	AAA (LR03) dry battery: 2pc	
Dimensions	120(W)x95(D)x58(H)mm	
Weight	320g	
Operation condition	0 to 95% RH and 0 to 40°C (non-dew)	
Storage condition	0 to 95% RH and -40 to 80°C (non-dew)	
Resistance features*2	Shock: 76cm (30inch) all directions drop	
	Dust resistance: Exposure to dust (0.1 to 500μm dia. Alumina Silicate)	
	Rain resistance: H=10mm/hr for 10min	

*1 The Bluetooth wireless connection of this product is not guaranteed to work with all smartphones or other devices.

*2 Carried out in Fujikura labs in Japan. The shock resistance test does not guarantee the product will not be damaged under these conditions.

• Bluetooth® and Bluetooth logo is a registered trademark of Bluetooth SIG, Inc.



STANDARD PACKAGE

Description	Model No.	Qty.
Fiber plate	AD-50	1pc
Spacer	SPA-CT08-10	1pc
Carrying case	CC-37	1pc
Hexagonal wrench	HEX-01	1pc
Instruction manual	M-CT50-E	1pc

OPTIONAL ITEMS

Description	Model No.
Blade	CB-08
Arm set	ARM-CT50-01
Dust box	FDB-05
Blade rotary wheel	BRW-CT08-01
Side cover	SC-CT50-01

STANDARD PACKAGE



OPTIONAL ITEMS



FIBER HOLDERS

Description	Model No.
Applicable fiber holder	FH-60-xxx
	FH-70-xxx
	FH-100-xxx

913·10-0842-142·95-00

Printed in Japan 1805-1805-0-JCC

Specifications and descriptions are subject to change without prior notice.

überreicht durch:
Opternus

Opternus GmbH Optische Spleiss- & Messtechnik
Bahnhofstr. 5 Tel. +49(0)4532-20 44-0
D-22941 Bargteheide Fax +49(0)4532-20 44-25

Büro Süd:
Katharinenstr. 57
D-73728 Esslingen

Tel. +49(0)711-3 10 59 99-0
Fax +49(0)711-3 10 59 99-99

E-Mail: info@opternus.de - www.opternus.de - www.opternus-shop.de