

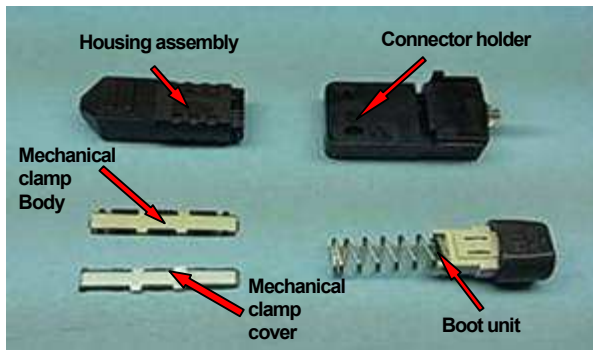
FuseConnect-MPO Assembly Manual

Note: During fiber preparation, broken fiber may get injure the eyes or other parts of the body. Always wear eye protection when handling optical fibers and dispose of any cut or cleaved ends properly.

1. Connector components and tools

Fuseconnect-MPO is assembled with the parts shown below.

1.1. Connector unit



1.2. Assembly tools



Fusion splicer (60R)



Fiber holder (FH-50-12)



Mechanical sleeve installer base



Mechanical sleeve press

2. Fiber preparation tools



Fiber Cleaver (CT-30)



Fiber Stripper (HJS-02)

3. Operation Procedure

3.1. Preparation

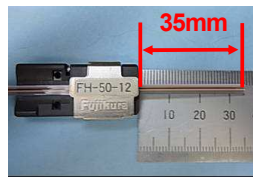
3.1.1. Insert boot



Insert boot unit through the ribbon fiber.

3.2. Cable Processing

3.2.1. Strip fiber



Set ribbon fiber on fiber holder

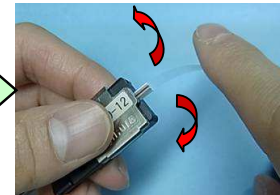


Set fiber holder on fiber stripper
Note: There is no gap between fiber holder and stripper



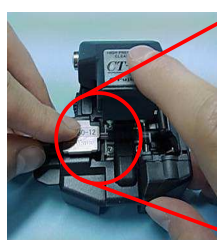
Strip ribbon fiber

3.2.2. Cleaning; screening



Clean the fiber surface after the coating is removed with cotton dipped in alcohol. Bend the fiber up and down, left and right 3 times slowly with the finger (about 60°) to verify that it does not break.

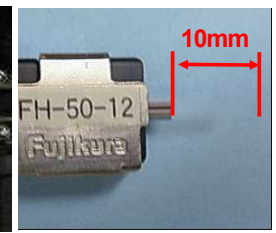
3.2.3. Cleave fiber



Set fiber holder on cleaver



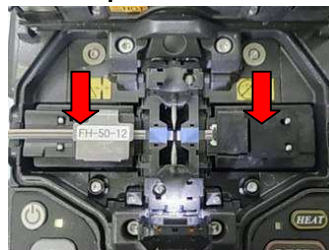
Note: There is no gap between fiber holder and cleaver



Cleave fiber leaving 10mm of bare fiber

3.3. Fiber Termination

3.3.1. Preparation



Set fiber holder and connector holder on fusion splicer

3.3.2. Fusion splice

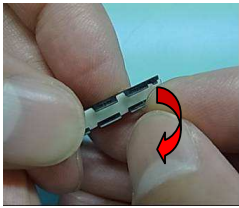


Splice cable to connector

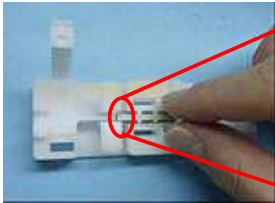
Specifications and descriptions are subject to change without prior notice.

3.4. Reinforce splice point by mechanical clamp

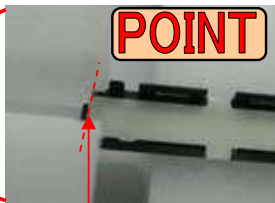
3.4.1 Set mechanical clamp body on assembly tool



Peel off the protection film of mechanical clamp body.



Set mechanical clamp body on assembly tool



Note: Ensure there is no gap at this point

3.4.2. Remove spliced fiber



Grip ribbon fiber and connector holder, then remove spliced fiber

3.4.3. Set spliced fiber on assembly tool

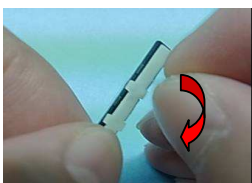


Set spliced fiber on assembly tool



Note: Shut the hinge while pulling the fiber.

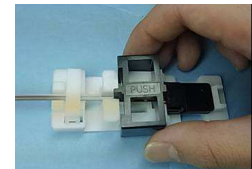
3.4.4. Assemble mechanical clamp



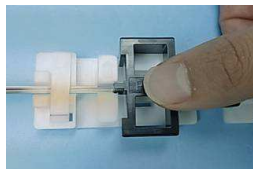
Peel off the protection film of mechanical clamp cover.



Set mechanical clamp cover in the hinge segment of the assembly tool.

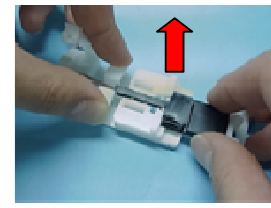
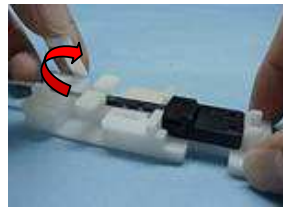


Shut mechanical clamp cover by mechanical sleeve press

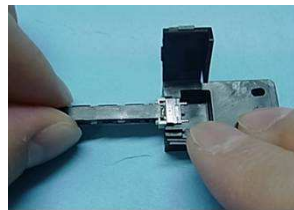


3.5. Housing assembly

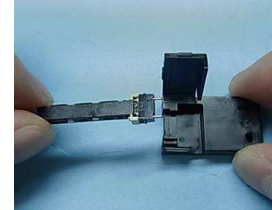
3.5.1 Removing the connector form assembly tool



Remove connector holder from assembly tool while releasing the hinge

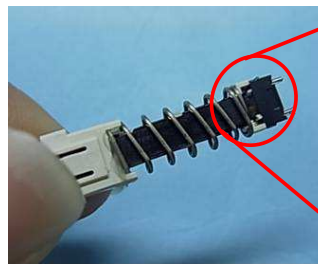


Open cover of connector holder

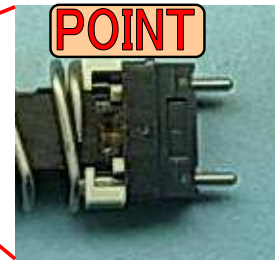


Remove connector from connector holder.

3.5.2 Assemble boot unit and housing assembly



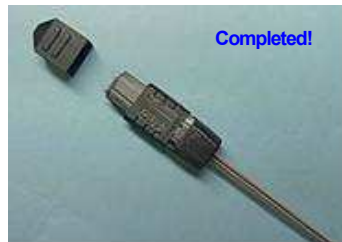
Insert boot unit into pin clamp



Note: Insert projection of pin clamp in spring.



Insert boot unit into housing assembly and ensure latch is secured



"Tsunagu" Technology
Fujikura

Specifications and descriptions are subject to change without prior notice.

überreicht durch:

Opternus

Opternus GmbH Optische Spleiss- & Messtechnik

Bahnhofstr. 5
D-22941 Bargteheide

Tel. +49(0)4532-20 44-0
Fax +49(0)4532-20 44-25

Büro Süd:

Wäldenbronner Str. 2
D-73732 Esslingen

Tel. +49(0)711-3 10 59 99-0
Fax +49(0)711-3 10 59 99-99

E-Mail: info@opternus.de - www.opternus.de - www.opternus-shop.de