

# EXFO Optical Explorer








## Overview

Models:  
1310/1550 nm  
1650 nm

### BASIC

#### Features and functions









-  Light source / Power checker
-  EXFO Advisor 5-star rating
-  Contextual wavelength auto-selection
-  Flash Advisor
-  Fault Explorer

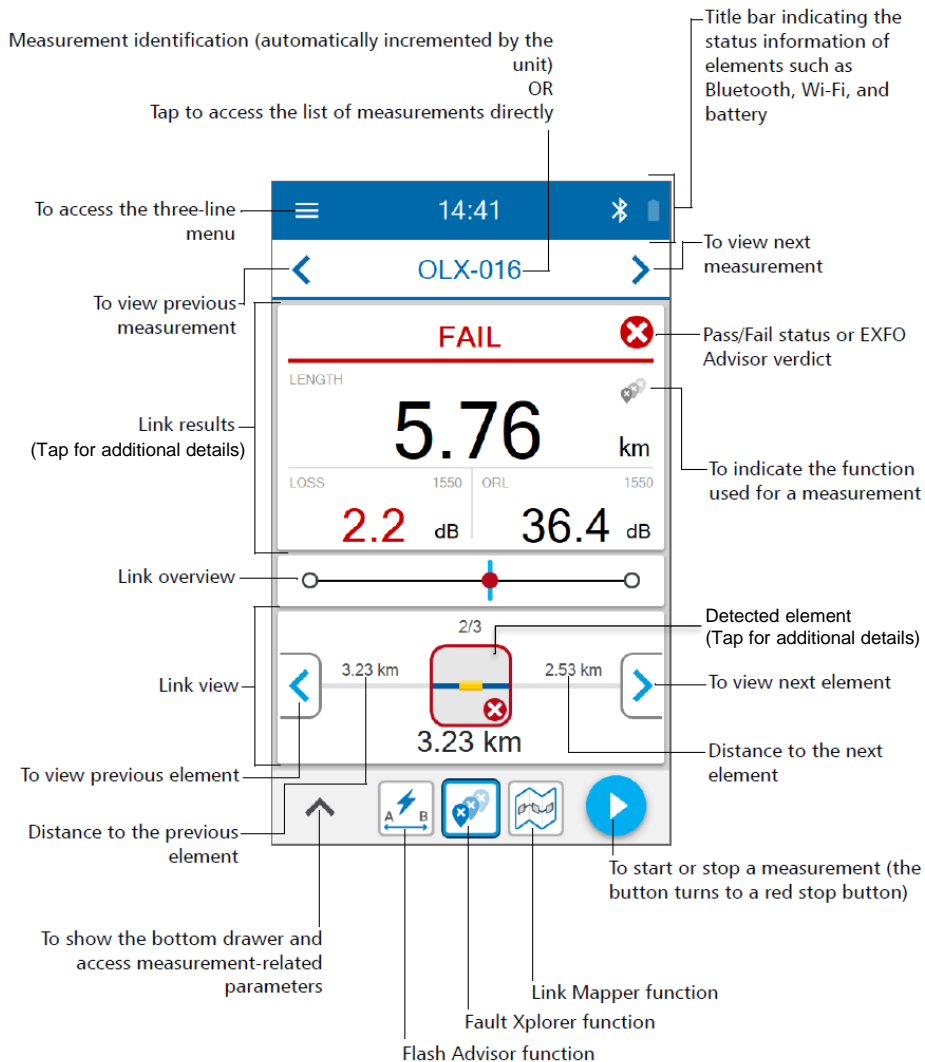


### PRO

Models:  
1310/1550 nm  
1650 nm  
1310/1550/1650nm (Live)

#### Features and functions

-  Light source / Power checker
-  EXFO Advisor 5-star rating scale
-  Contextual wavelength auto-selection
-  Flash Advisor
-  Fault Explorer
-  Link Mapper
-  Connectivity to splitter detection
-  Click-Out optical connector



★ Patent-pending

Get started

## Powering up the OX1

Press the on/off button until the unit beeps once. LED lights up and remain lit until the splash screen is displayed



## Overview of OX1 Testing Functions

**Flash Advisor**  
Lightning fast verification of link quality and length

★★★★★

⬆️ ⚡️ ⚙️ 📄 ▶️

19:14

OLX-525

★★★★★

POWER	1577	LENGTH	⚡️
-12,5		5,78	km
LOSS	1650	ORL	1650
1,9		37,0	dB

⬆️ ⚡️ ⚙️ 📄 ▶️

**Fault Xplorer**  
Swift link verification with embedded fault tracking

★★★★★

⬆️ ⚡️ ⚙️ 📄 ▶️

19:17

OLX-529

PASS ✓

POWER	1577	LENGTH	⚡️
-16,2		5,78	km
LOSS	1650	ORL	1650
1,9		37,0	dB

1/2

20,2 m 5,78 km

0,0 m

⬆️ ⚡️ ⚙️ 📄 ▶️

Pro models only

**Link Mapper**  
Link verification with fault tracking and element

★★★★★

⬆️ ⚡️ ⚙️ 📄 ▶️

10:55

OLX-049

PASS ✓

LENGTH

5.80 km

LOSS	1650	ORL	1650
3.3		38.3	dB

2/5

500 m 151 m

500 m

⬆️ ⚡️ ⚙️ 📄 ▶️

## TestFlow Mobile App Functions



The OX1 unit may be paired to TestFlow Mobile app to:

- Create PDF single test report
- Customize job information
- Store test results to the cloud
- Create PDF Job report

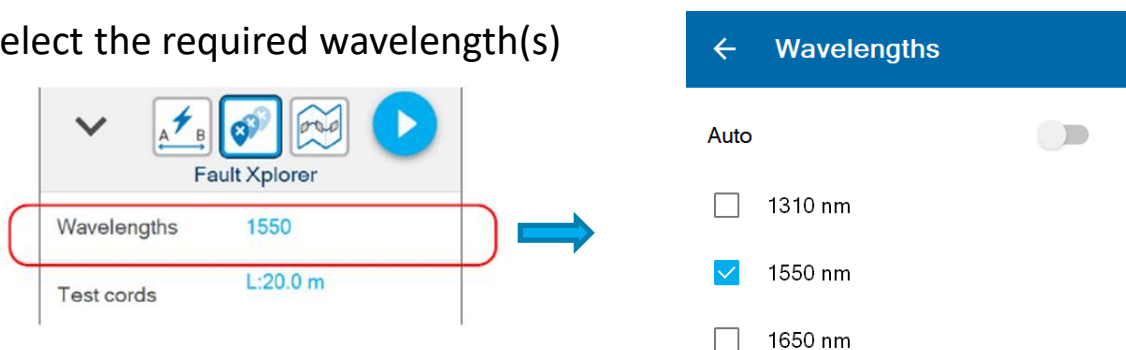
TestFlow credentials required

## Quick Test Setup

1.1: On bottom left of the screen, tap the arrow key to access the quick setup menu

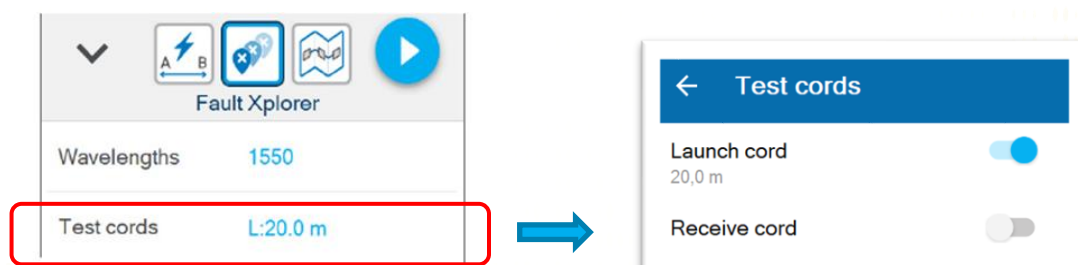


1.2: Select the required wavelength(s)



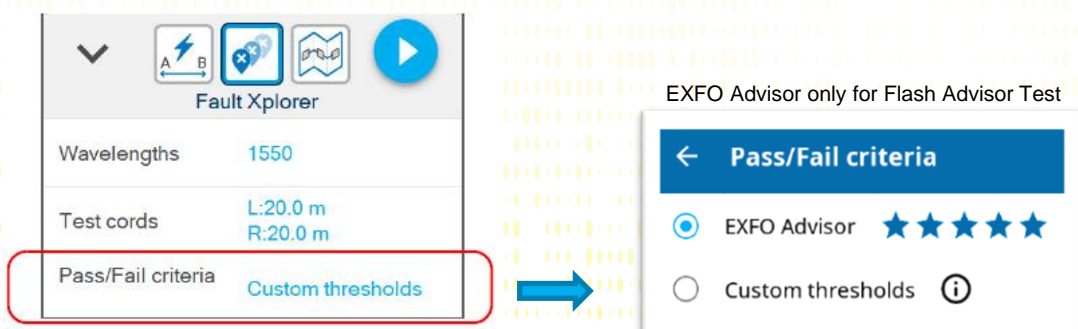
1.3: Set up the test cords

*(Recommended Length: 20m (APC connector) – 60m (UPC connector))*



1.4: Select Pass/Fail criteria among:

EXFO Advisor™, the 5 star rating of fibre link health  
or Custom thresholds to edit customized thresholds



## Test and Results

1.1: Select the desired test function:  
Flash Advisor, Fault Xplorer or Link Mapper (on Pro model only)

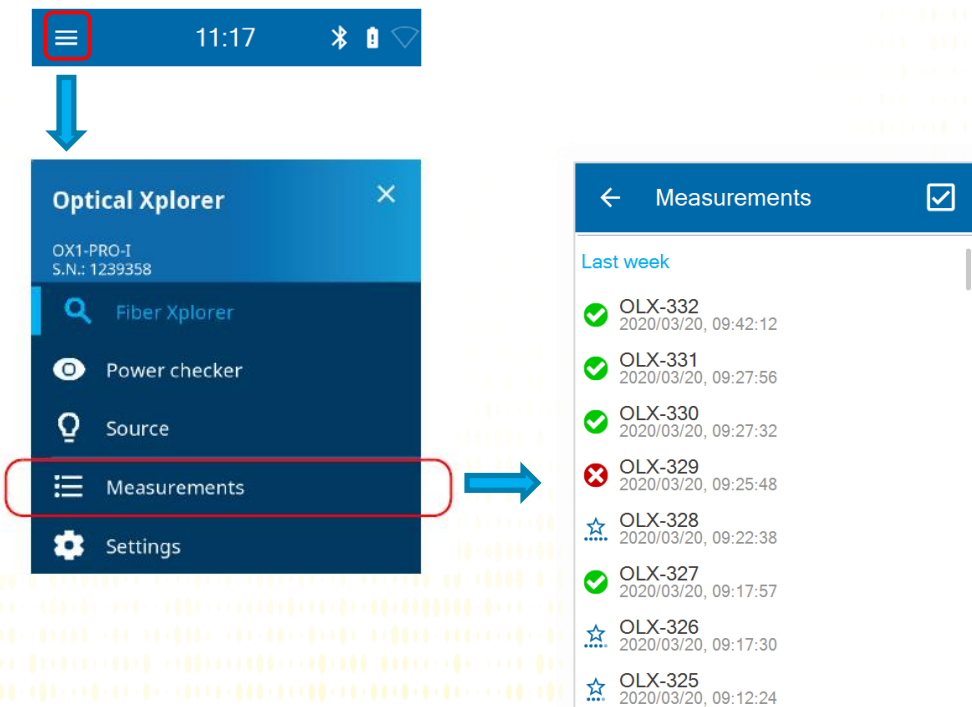


1.2 Tap start button



1.3 Tests results are stored automatically. File auto-naming and auto-increment is enabled by default (*OLX-XXX format*)

1.4: To view and manage results , tap on measurements from the main menu



## Pair OX1 Unit to your Smartphone



1.1 If you have a TestFlow account, enter your credentials (1) to enter TestFlow Mobile app. Otherwise, Tap “NOT NOW” (2) and Open the main menu (3)



1.2 Select Optical Explorer (4)

The first screenshot shows the TestFlow login screen with fields for E-mail and Password, and a 'NOT NOW' button. The second screenshot shows the 'Jobs' screen with a 'Welcome to TestFlow Mobile' message and a list of features. The third screenshot shows the 'Tools' menu with 'Optical Xplorer' selected.



1.3 Pair the desired OX1 unit to your smartphone

*(Bluetooth function must be activated both on the OX1 unit and the smartphone)*

The left screenshot shows the 'Connect' screen with a list of OX1 units. The right screenshot shows the 'Optical Xplorer' screen with a list of test results.

Once paired, OX1 results are displayed on your smartphone

## Create PDF Single Test Report

- 1.1 Once the OX1 paired to your Smartphone, Tap on the desired measurement to open it (1)
- 1.2 Tap the three dot menu (2) and Select PDF report (3)
- 1.3 Edit Report information and Tap CREATE (4)

The screenshots illustrate the process of generating a PDF report from a single test measurement in the EXFO Optical Explorer mobile application.

**Step 1:** The 'Optical Explorer' main screen displays a list of measurements under 'Last week'. The measurement 'OLX-328' (dated 2020/03/20, 09:22:36) is selected, indicated by a red box and a blue arrow.

**Step 2:** The 'OLX measurement' screen for 'OLX-328' is shown. The three-dot menu icon in the top right corner is highlighted with a red box and the number 2.

**Step 3:** The menu is open, showing options: 'PDF report', 'OX1 settings', and 'Disconnect from OX1'. The 'PDF report' option is highlighted with a red box and the number 3.

**Step 4:** The 'Report details' form is displayed. The 'CREATE' button in the top right corner is highlighted with a red box and the number 4. The form contains the following fields:

- Title: OLX-015
- Identifiers
- Job ID
- Operator
- Customer
- Location
- Fiber ID
- Comments
- Additional information
- Measurement date

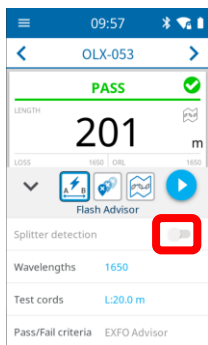
## Features

### Splitter detection (Link Mapper) Pro models only

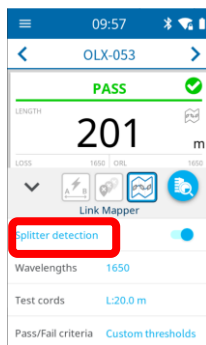
#### Enabling splitter detection



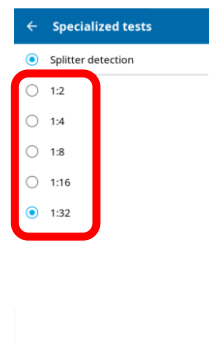
1. Open main parameters panel



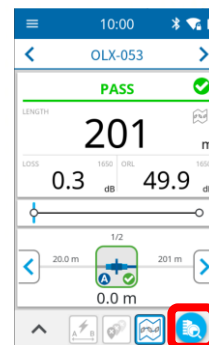
2. Activate splitter detection



3. Open splitter ratio selection panel

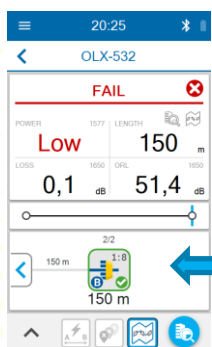


4. Select splitter ratio

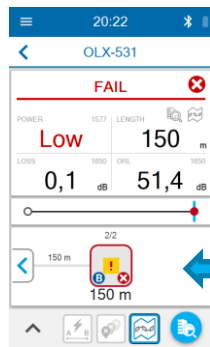


5. Press start (note the button has changed to warn user)

#### Interpreting splitter detection result



Expected splitter is found. Continuity at splitter is confirmed



Expected splitter is NOT found. Continuity at splitter is NOT confirmed

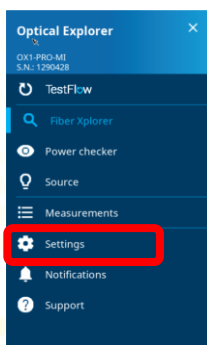
### Power measurement in Fiber Xplorer view

M & MI Live test configurations only

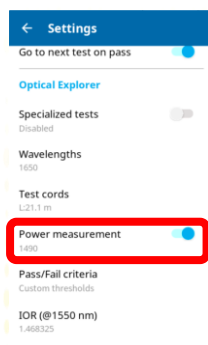
#### Enabling power measurement in Fiber Xplorer view



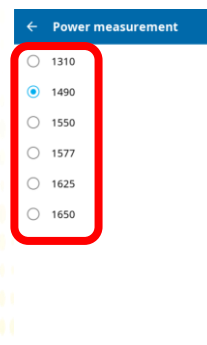
1. Open main menu



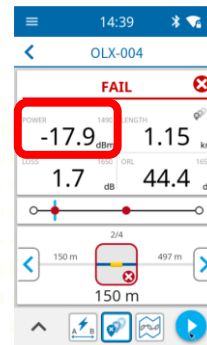
2. Open settings



3. Scroll down to Power measurement, activate it and select requested wavelength by tapping on the wavelength



4. Select wavelength



5. On next acquisition, incoming power will be displayed along with link key optical metrics

## Work in Job Mode with TestFlow

OX1 unit can work in pair with TestFlow Mobile app and download a TestFlow job consisting in a list of predefined fibers to be tested. Once the job completed, the OX1 results are uploaded to TestFlow via the app, enabling the cloud archiving and all TestFlow features (ex: job report)

## Complete a TestFlow Job with OX1


- 1.1 Logon to the TestFlow Mobile App
- 1.2 If a job has been created by your administrator, go to 1.4 section
- 1.3 To create a new job In the **Jobs** screen, tap on **+** icon (1)
  - (1/4) Select **Blank job** and tap **NEXT** on top right
  - (2/4) Edit the Job ID, names and locations and tap **NEXT**
  - (3/4) Select **OLX (Optical Explorer)** and tap **NEXT**
  - (4/4) Edit the project information and click **CREATE**
- 1.4 The new Job is displayed in the job list. Tap **>** of the desired job (2)
- 1.6 Click on **○** icon of one fiber to be tested (3)
- 1.7 On the pop-up menu, tap **SYNC** (4) to sync the job with the OX1
- 1.8 The job is downloaded into the OX1. Open it and test until completion (5)

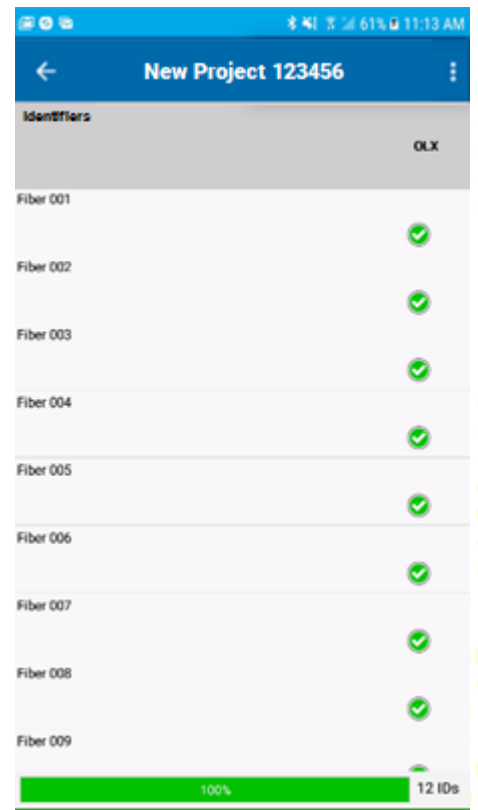
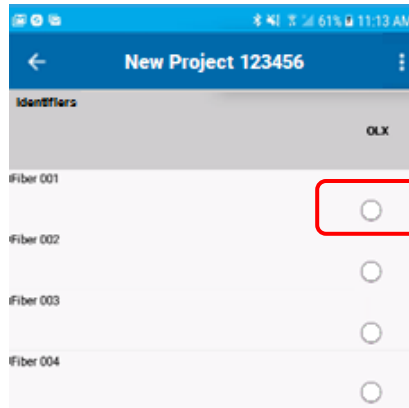
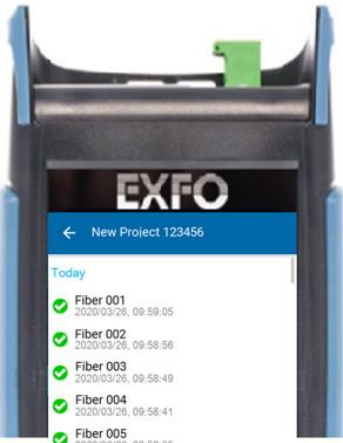
The image illustrates the workflow for completing a TestFlow job with the OX1 unit. It consists of several screenshots from the TestFlow Mobile app and the EXFO Optical Explorer device. 1. The 'Jobs' screen shows a list of projects (Project A001, Project A002, Project A003, and New Project 123456) with progress bars. A red box highlights the '+' icon (1) used to create a new job. 2. The 'New Project 123456' screen shows the 'Identifiers' section with 'OLX' selected. A red box highlights the '○' icon (3) next to 'Fiber 001'. 3. A dialog box titled 'Sync job with the OX1' appears, stating 'This job will be synced with the OX1-1214336.' A red box highlights the 'SYNC' button (4). 4. The EXFO Optical Explorer device screen shows the 'Optical Explorer' interface with a menu item 'New Project 123456' highlighted by a red box (5).




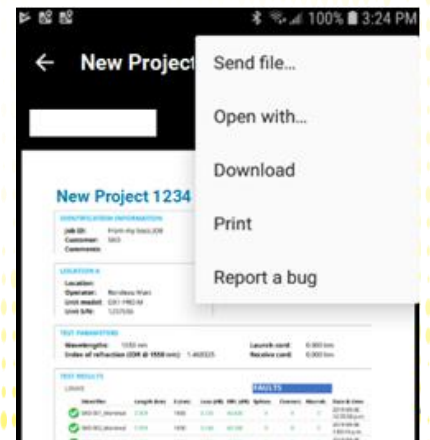
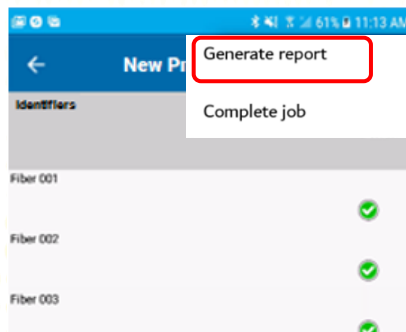
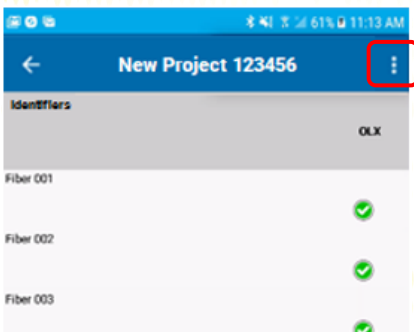
## Job Cloud Storage and Report



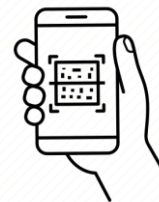
1.1 Once the job completed into the OX1, display the job in TestFlow Mobile and Tap  and press **SYNC** to sync back OX1's results into TestFlow Mobile. All results are automatically stored in TestFlow cloud.



1.2 Job report generation can be done on TestFlow Mobile if needed. Into the job Tap  and Select **Generate report**

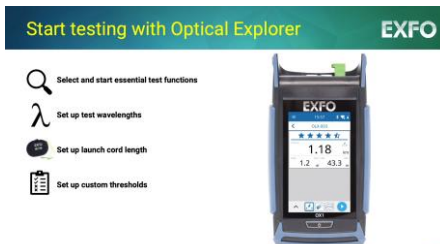


## How-to Videos



Scan QR code to  
access the video

### Start testing with Optical Explorer (5'31")



<https://www.opternus.de/video/exfo-ox1-start-testing>

### Pairing Optical Explorer with smart device and connecting Optical Explorer to WiFi (3'09")



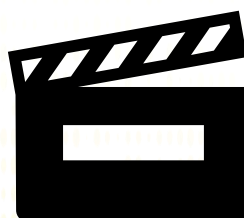
<https://www.opternus.de/video/exfo-ox1-pairing>

### Updating Software on Optical Explorer (1'28")



<https://www.opternus.de/video/exfo-ox1-update-software>

### Consulting test results and generating a report



Upcoming