

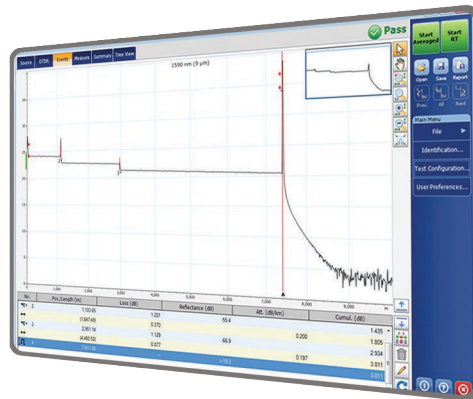
Optical Wave Expert

MEASURE, DIAGNOSE AND TROUBLESHOOT ON A SINGLE PORT

■ An industry-first device that combines channel power validation with tunable DWDM OTDR capabilities on a single port.



iOLM
READY



KEY FEATURES

- Integrated DWDM channel checker and OTDR on a single port (patent-pending)
- Intelligent channel power level measurements
- Compact and portable form factor
- iOLM-ready: one-touch multiple acquisitions, with clear MUX/DEMUX characterization
- C-BAND ITU-T G.692 DWDM grid channels (12-62)
- Bar graph and table view on wide touchscreen display
- In-channel and testing of active networks
- Intuitive graphical user interface (GUI) and workflow
- Market-leading onboard PDF reporting solution and essential PC based post-processing included for all users

APPLICATIONS

- DWDM link characterization through MUX, DEMUX and OADM
- DWDM link troubleshooting (DAA, RPHY, C-RAN)
- DWDM metro Ethernet links
- Deployment of commercial services
- Point-to-multipoint (P2MP) access networks

RELATED PRODUCTS



Fiber inspection scope
FIP-400B (WiFi or USB)



xWDM OTDR
FTBx-740C



Optical spectrum analyser
FTBx-5235



100G multiservice test module
FTBx-88200NGE



INTELLIGENT, AUTOMATED AND INTEGRATED. INNOVATION AT WORK.

The Optical Wave Expert integrates channel power validation and reflectometry characterization on a single port. This means that technicians can automatically identify faulty channels and follow through with fault location by leveraging OTDR or intelligent Optical Link Mapper (iOLM) capabilities.

Technicians can now perform instant channel power readings through an intuitive GUI environment and seamlessly benefit from tunable OTDR capabilities. The rugged and compact MaxTester platform provides the most efficient and practical form factor for field use.

The integration of channel checker and OTDR capabilities on a single port means less unnecessary manipulation of the optical fiber and improved field efficiency. This translates into faster mean-time-to-repair (MTTR) and makes the trial and error approach—which can disable nodes—obsolete.

CHANNEL CHECKER

Thanks to the bar graph and the intuitive wide touchscreen, the channel power diagnostics are displayed clearly.

By combining a channel checker and OTDR capabilities on a single port, the workflow becomes highly efficient. Technicians can assess the power levels and locate faults on the spot, for improved mean time to repair (MTTR). This patent-pending feature not only saves time but also reduces unnecessary manipulations, hence avoiding damage to the connectors.

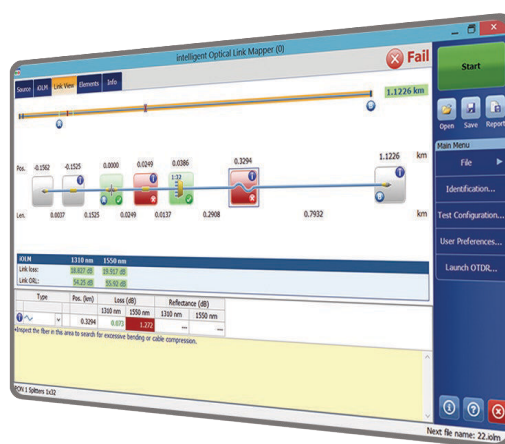


DWDM OTDR

Once the channel power diagnosis has detected a faulty channel, the OTDR can be configured with the appropriate parameters. This combination of channel checker and OTDR avoids additional manipulations and reduces the risk of human error.

Use a DWDM tunable OTDR for:

- Characterizing a single-ended fiber link
- Validating continuity and end-to-end loss through MUX, OADM and DEMUX (during construction)
- In-service testing using the customer's wavelength port—without impacting other customer wavelengths nor incurring downtime
- Troubleshooting and characterization by a single operator from the headend
- Live troubleshooting without damaging SFPs^a



a. The iOLM advanced package includes the Optimode—SFP safe.

iOLM—REMOVING THE COMPLEXITY FROM OTDR TESTING

OTDR testing comes with its load of challenges...



WRONG OTDR TRACES



COUNTLESS TRACES TO ANALYZE



REPEATING THE SAME JOB TWICE



COMPLEX INSTRUMENT TRAINING/SUPPORT

In response to these challenges, EXFO developed a better way to test fiber optics: The iOLM is an OTDR-based application designed to simplify OTDR testing by eliminating the need to configure parameters, and/or analyze and interpret multiple complex OTDR traces. Its advanced algorithms dynamically define the testing parameters, as well as the number of acquisitions that best fit the network under test. By correlating multipulse widths on multiple wavelengths, the iOLM locates and identifies faults with maximum resolution—all at the push of a single button.

How does it work?



Turning traditional OTDR testing into clear, automated, first-time-right results for technicians of any skill level.

Patent protection applies to the iOLM, including its proprietary measurement software.

Three ways to benefit from the iOLM

COMBO



Run both iOLM and OTDR applications (Oi code)

UPGRADE



Add the iOLM software option to your iOLM-ready unit, even while in the field

iOLM ONLY



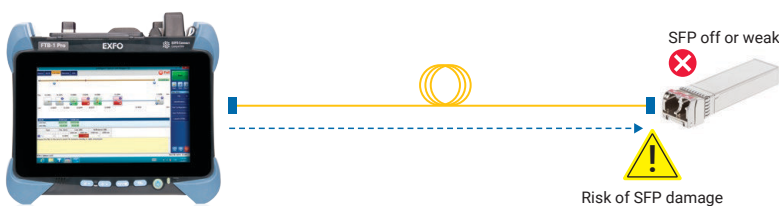
Order a unit with the iOLM application only

iOLM features value pack

In addition to the standard iOLM feature set, you can select added-value features as part of the **Advanced** package or standalone options. Please refer to the iOLM specification sheet for the complete and most recent description of these value packs.

iOLM Advanced with SFP-Safe Troubleshooting

Ideal for point-to-point troubleshooting when an SFP might be connected on the far end. When technicians are dispatched on-site, they are still unaware of what is wrong and may accidentally damage a transceiver with an uncontrolled pulse width. EXFO's patented SFP-Safe Troubleshooting solution prevents the risk and guarantees no damages to the SFP while troubleshooting, yielding cost savings and faster time to recovery.

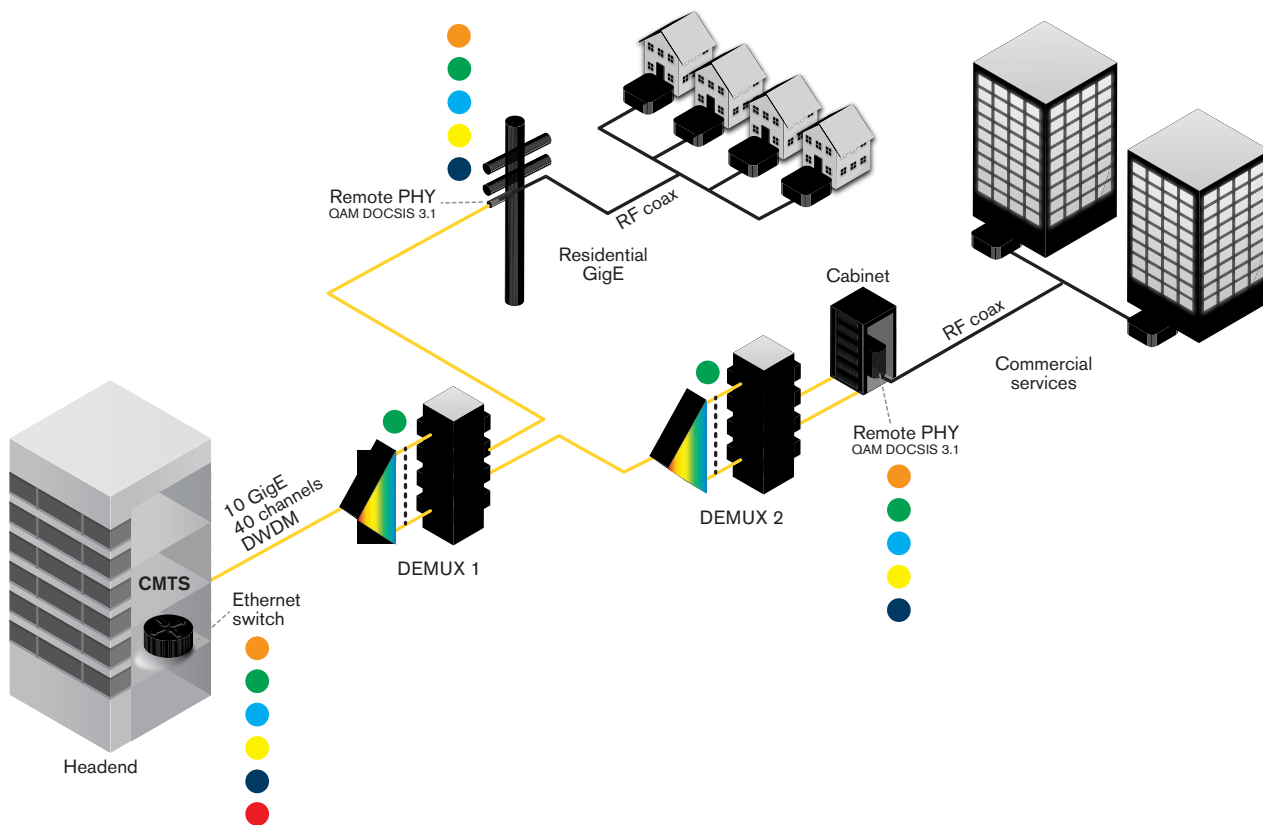


Watch it in action: [SFP-Safe Troubleshooting](#)



END-TO-END DWDM FOOTPRINT

Empowering the technician from the headend to the node



Essential tools for comprehensive testing

Optical Wave Expert

FIP-400B Series

FTB-740 Series

FTB-5235

EtherCHK-1-10

FTB-5700



Orange circle icon

Green circle icon

Blue circle icon

Yellow circle icon

Dark blue circle icon

Red circle icon

Architecture example of Node+0 with Remote PHY

ALSO AVAILABLE IN FTBx FORMAT

The Optical Wave Expert is also available as an FTBx module, that can be used with the following FTB test platforms:



FTBx module
Optical Wave Expert

This module is compatible with:



Platform
FTB-1v2/FTB-1Pro



Platform
FTB-2/FTB-2 Pro



Platform
FTB-4 Pro



GET ALL ADVANCED CAPABILITIES FOR FREE

FastReporter is a consolidated data management and post-processing solution designed to improve results quality as well as auditing and reporting productivity.

Download the latest version of FastReporter, launch the application and create your EXFO Exchange account to get the full range of capabilities, at no cost. EXFO Exchange automates and optimizes workflows, troubleshooting, field testing and reporting within a secured collaborative software platform for each step of network deployment.

FEATURES	FastReporter (version 3)	
	Basic	Full (now free with EXFO Exchange account)
Number of files	Up to 24 results	Unlimited
Measurement type	OTDR, iOLM, FIP, OLTS, OPM, CD, PMD	
Results viewer	•	•
Reporting – Basic (PDF)	•	•
Reporting – Advanced (Excel, PDF, custom)		•
Basic analysis – Bidir (OTDR and iOLM)	•	•
Advanced editing		•
Automated validation and results correction		•
Job management and identification edition	One file	Batch processing
Hundreds of additional features		•

Comparison of BASIC and FULL versions of FastReporter (version 3).



OTDR SPECIFICATIONS (for MAX and FTBx version)

All specifications valid at 23 °C ± 2 °C with an FC/APC connector, unless otherwise specified.

TECHNICAL SPECIFICATIONS	
Laser nominal wavelength	C-band tunable 1527.99-1567.95 nm ITU-T G694.1 channels 12-62 (191.2-196.2 THz)
Central wavelength uncertainty ^a	DWDM 50 GHz channel wavelength control
Channel spacing tuning	50 GHz and 100 GHz increments on ITU-T G694.1 grid
Dynamic range at 20 μs (dB) ^b	40
Event dead zone (m) ^c	0.7
Attenuation dead zone (m) ^c	3.5
Distance range (km)	0.1 to 400
Pulse widths (ns)	5 to 20 000
Sampling points	Up to 256 000
Sampling resolution (m)	0.04 to 10
Distance accuracy (m) ^d	±(0.75 + 0.0025 % x distance + resolution)

OPTICAL CHANNEL CHECKER SPECIFICATIONS (for MAX and FTBx version)

TECHNICAL SPECIFICATIONS ^e	
Wavelength range (C-band)	1527.99-1567.95 nm (191.2-196.2 THz)
ITU channels	ITU-T G694.1 channels 12-62
Channel spacing	DWDM 100 GHz
Dynamic range per channel (dBm)	10 to -40
Maximum total safe power (dBm)	20
Absolute power uncertainty (dB) (typical)	1
ORL (dB)	> 35
Measurement time (s)	< 3

Note: For complete details on all available configurations, please refer to the ordering information section further below.


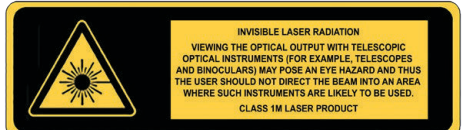
- a. Typical, using a 10-μs pulse.
- b. Typical dynamic range with a three-minute averaging at SNR = 1.
- c. Typical for reflectance at -45 dB, using a 5-ns pulse.
- d. Does not include uncertainty due to fiber index.
- e. All specifications typical at 1550 nm and 23 °C ± 2 °C, with an SC connector.



SPECIFICATIONS (for MAX version only)

BUILT-IN POWER METER SPECIFICATIONS (GeX) (optional) ^a	
Calibrated wavelengths (nm)	850, 1300, 1310, 1490, 1550, 1625, 1650
Power range (dBm) ^b	27 to -50
Uncertainty (%)	±5 % ± 10 nW
Display resolution (dB)	0.01 = max to -40 dBm 0.1 = -40 dBm to -50 dBm
Automatic offset nulling range ^{b, d}	Max power to -30 dBm
Tone detection (Hz)	270/330/1000/2000

VISUAL FAULT LOCATOR (VFL) (optional)	
Laser, 650 nm ± 10 nm	
CW/Modulate 1 Hz	
Typical P _{out} in 62.5/125 μm: > -1.5 dBm (0.7 mW)	
Laser safety: Class 2	

LASER SAFETY ^e	
 <p>IEC/CEI 60825-1: 2014 LASER RADIATION DO NOT STARE INTO THE BEAM CLASS 2 LASER PRODUCT RAYONNEMENT LASER NE PAS REGARDER DANS LE FAISCEAU APPAREIL À LASER DE CLASSE 2 λ: 650 nm ± 10 nm, P_{out} / P_{sortie} max < 2 mW</p>	 <p>INVISIBLE LASER RADIATION VIEWING THE OPTICAL OUTPUT WITH TELESCOPIC OPTICAL INSTRUMENTS (FOR EXAMPLE, TELESCOPES AND BINOCULARS) MAY POSE AN EYE HAZARD AND THUS THE USER SHOULD NOT DIRECT THE BEAM INTO AN AREA WHERE SUCH INSTRUMENTS ARE LIKELY TO BE USED. CLASS 1M LASER PRODUCT</p>

GENERAL SPECIFICATIONS (for MAX version only)

TECHNICAL SPECIFICATIONS	
Display	7-in (178-mm) outdoor-enhanced touchscreen, 800 x 480 TFT
Interfaces	Two USB 2.0 ports RJ45 LAN 10/100 Mbit/s
Storage	2 GB internal memory (20 000 OTDR traces, typical)
Batteries	Rechargeable lithium-polymer battery 8 hours of operation as per Telcordia (Bellcore) TR-NWT-001138
Power supply	Power supply AC/DC adapter, input 100-240 VAC, 50-60 Hz
Size (H x W x D)	166 mm x 200 mm x 68 mm (6 9/16 in x 7 7/8 in x 2 3/4 in)
Weight (with battery)	1.5 kg (3.3 lb)
Temperature	operating ^f -10 °C to 50 °C (14 °F to 122 °F) Storage -40 °C to 70 °C (-40 °F to 158 °F)
Relative humidity	0 % to 95 % noncondensing

ACCESSORIES (optional)			
GP-10-100	Rigid carrying case	GP-2208	Spare stylus
GP-10-061	Soft carrying case	GP-2209	Spare battery
GP-10-072	Semi-rigid carrying case	GP-2240	Utility glove
GP-1008	VFL adapter (2.50 mm to 1.25 mm)	GP-2242	Replacement hand strap
GP-2155	Carry-on size backpack	GP-2243	Spare AC/DC adapter (specify country power cord)
GP-2205	DC vehicle battery-charging adaptor (12 V)	GP-3115	Kickstand

a. At 23 °C ± 1 °C, 1550 nm and FC connector. With modules in idle mode. Battery operated after 20-minute warm-up.

b. Typical.

c. At calibration conditions.

d. For ±0.05 dB, from 10 °C to 30 °C.

e. Class 2 laser safety applicable for the VFL option.

f. Valid for OTDR/iOLM tests; for Channel Checker tests operating temperature 0 °C to 40 °C.

ORDERING INFORMATION

MAX-740C-DWOCC-XX-XX-XX-XX-XX-XX-XX-XX-XX-XX-XX

Model

MAX-740C-DWOCC = DWDM tunable SM OTDR
+ channel checker C-band
1528-1568 nm (ITU 12-62),
100 GHz, 40 dB (9/125 μm)

Base software

OTDR = Enables OTDR application only
iOLM = Enables iOLM application only
Oi = Enables OTDR and iOLM applications

iOLM optional software packs^a

00 = iOLM Standard
iADV = iOLM Advanced

Software options

00 = Without additional software option
iLOOP = iOLM loopback mode^a
iCERT = iOLM tier-2 certification^a
PSWRD = Security management option

Connector

EA-EUI-28 = APC/DIN 47256
EA-EUI-89 = APC/FC narrow key
EA-EUI-91 = APC/SC
EA-EUI-95 = APC/E-2000
EA-EUI-98 = APC/LC

Power meter

00 = Without power meter
VFL = Visual fault locator (650 nm)
PM2X = Power meter; GeX detector
VPM2X = VFL and power meter; GeX detector

Power meter connector adapter

FOA-12 = Biconic
FOA-14 = NEC D4: PC, SPC, UPC
FOA-16 = SMA/905, SMA-906
FOA-22 = FC/PC, FC/SPC, FC/UPC, FC/APC
FOA-28 = DIN 47256, DIN 47256/APC
FOA-32 = ST: ST/PC, ST/SPC, ST/UPC
FOA-54B = SC: SC/PC, SC/SPC, SC/UPC, SC/APC
FOA-78 = Radial EC
FOA-96B = E-2000/APC
FOA-98 = LC
FOA-99 = MU

WiFi and Bluetooth

00 = Without RF components
RF = With RF capability (WiFi and Bluetooth)^{b,c}

Extra FIP-400B tips^d**Bulkhead tips**

FIPT-400-LC = LC tip for bulkhead adapters
FIPT-400-LC-APC = LC/APC tip for bulkhead adapter
FIPT-400-SC-APC = SC APC tip for bulkhead adapter^f
FIPT-400-SC-UPC = SC UPC tip for bulkhead adapter

Patchcord tips

FIPT-400-U12M = Universal patchcord tip for 1.25 mm ferrules
FIPT-400-U12MA = Universal patchcord tip for 1.25 mm ferrules APC
FIPT-400-U25M = Universal patchcord tip for 2.5 mm ferrules^g
FIPT-400-U25MA = Universal patchcord tip for 2.5 mm ferrules APC^f

Base tips^f

APC = Includes FIPT-400-U25MA and FIPT-400-SC-APC
UPC = Includes FIPT-400-U25M and FIPT-400-FC-SC

Inspection scope model^h

00 = Without inspection scope
FP430B = Automated analysis digital video inspection scope
Automated focus
Automated pass/fail analysis
Triple magnification
Autocentering
FP435B = Wireless analysis digital video inspection scope^c
Automated focus
Automated pass/fail analysis
Triple magnification
Autocentering

Example: MAX-740C-DWOCC-Oi-iLOOP-EA-EUI-91-VPM2X-FOA-54B-FP435B-APC-RF

a. Only available if iOLM or Oi base software option is selected.

b. Not available in China.

c. RF option is mandatory and automatically included if FP435B fiber inspection scope model is selected.

d. This list represents a selection of fiber inspection tips that covers the most common connectors and applications but does not reflect all the tips available. EXFO offers a wide range of inspection tips, bulkhead adaptors and kits to cover many more connector types and different applications. Please contact your local EXFO sales representative or visit www.EXFO.com/FIPTips for more information.

e. Included when UPC base tips are selected.

f. Included when APC base tips are selected.

g. Available if inspection scope is selected.

h. Includes ConnectorMax2 software.



ORDERING INFORMATION

FTBx-740C-DWOCC-XX-XX-XX

Model

FTBx-740C-DWOCC = DWDM tunable SM OTDR
+ channel checker C-band
1528-1568 nm (ITU 12-62),
100 GHz, 40 dB (9/125 µm)

Base software

OTDR = Enables OTDR application only
iOLM = Enables iOLM application only
Oi = Enables OTDR and iOLM applications

Example: FTBx-740C-DWOCC-Oi-iADV-EA-EUI-91

Connector

EA-EUI-28 = APC/DIN 47256
EA-EUI-89 = APC/FC narrow key
EA-EUI-91 = APC/SC
EA-EUI-95 = APC/E-2000
EA-EUI-98 = APC/LC

iOLM software option

00 = iOLM Standard software
iADV = Enables iOLM Advanced
iLOOP = Enables loopback testing mode

EXFO headquarters T +1 418 683-0211 **Toll-free** +1 800 663-3936 (USA and Canada)

EXFO serves over 2000 customers in more than 100 countries. To find your local office contact details, please go to www.EXFO.com/contact.

For the most recent patent marking information, please visit www.EXFO.com/patent. EXFO is certified ISO 9001 and attests to the quality of these products. EXFO has made every effort to ensure that the information contained in this specification sheet is accurate. However, we accept no responsibility for any errors or omissions, and we reserve the right to modify design, characteristics and products at any time without obligation. Units of measurement in this document conform to SI standards and practices. In addition, all of EXFO's manufactured products are compliant with the European Union's WEEE directive. For more information, please visit www.EXFO.com/recycle. **Contact EXFO for prices and availability or to obtain the phone number of your local EXFO distributor.**

For the most recent version of this spec sheet, please go to www.EXFO.com/specs.

In case of discrepancy, the web version takes precedence over any printed literature.