

# Lightel Video Microscopes



## Overview

All Lightel video microscopes are eye safe and designed for portability and ease of use. Featuring single finger focusing and large 3.5" LCD screens or USB2.0 video interfaces, all scopes can be used with single mode and multimode fiber.

Lightel offers more than 50 tips for PC and APC simplex and multi-fiber connectors, and a variety of tips for difficult access applications including 60°, right angled and very extended tips.

All video microscopes are CE approved and RoHS compliant.

## CI-1000 & CI-1100

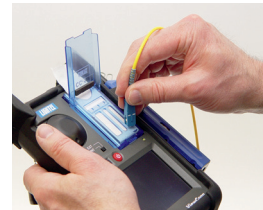
Our Connector Inspector products (CI-1000 and CI-1100) are portable video microscopes for inspecting fiber optic connector endface contamination. With a hand-held probe design inspection of both patchcords and difficult to reach in-adaptor connectors becomes simple.

Both the CI-1000 and the CI-1100 are available with a fold-up LCD monitor. A USB adapter for display and capture of images on your PC is also available for either model. Free ConnectorView image capture software comes with each USB device.



## ViewConn® (VC-6100 and VC-6200)

ViewConn (VC-6100 and VC-6200) enables users to inspect connector ends for contamination, clean the connectors, and re-inspect, ensuring optimal signal quality while reducing installation time. The USB port allows full image capture capability for documentation - all from one hand-held unit.



ViewConn Plus (VC-6100-PL and VC-6200-PL) enables inspection of both male and female connectors at the flip of a switch; no need to change tips. Both ViewConn and ViewConn Plus are ruggedized for use in the field and come with our free ConnectorView image capture software.

All offer integrated power meter options.

## DI-1000

The digital DI-1000 connects directly to your PC through the computer's USB2.0 port. Powered by the USB connection, it features an ergonomic design, built-in image freeze/capture button and digital zoom through our free ConnectorView software.

Optional ConnectorView Plus Pass /Fail software will work with all Lightel video microscopes.



Specifications and descriptions are subject to change without prior notice.

überreicht durch:

**Opternus**

Opternus GmbH Optische Spleiss- & Messtechnik

Bahnhofstr. 5  
D-22941 Bargtheide

Tel. +49(0)4532-20 44-0  
Fax +49(0)4532-20 44-25

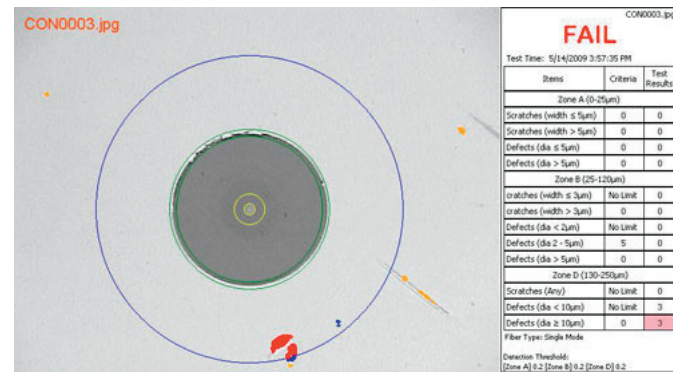
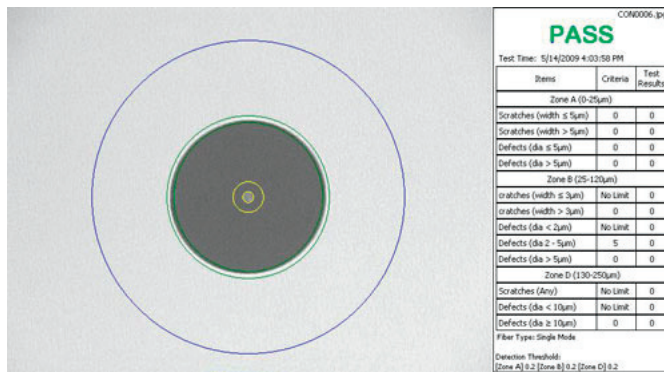
Büro Süd:

Wäldenbronner Str. 2  
D-73732 Esslingen

Tel. +49(0)711-3 10 59 99-0  
Fax +49(0)711-3 10 59 99-99

E-Mail: [info@opternus.de](mailto:info@opternus.de) - [www.opternus.de](http://www.opternus.de) - [www.opternus-shop.de](http://www.opternus-shop.de)

# Lightel Video Microscopes



Our optional ConnectorView™ Plus pass /fail software will work with all Lightel video microscopes for single mode and multimode fibers.

## Features Comparison

	CI-1000-A2	CI-1000-B2	CI-1100-A2	DI-1000	VC-6100 VC-6200	VC-6100-PL VC-6200-PL
Eye-safe video inspection	√	√	√	√	√	√
Hand Held	√	√	√	√	√	√
CE Approved	√	√	√	√	√	√
RoHS Compliant	√	√	√	√	√	√
LCD Display	√		√		√	√
USB connectivity	*	√	*	√	√	√
PC and APC connector viewing	√	√	√	√	√	√
Male connector viewing	√	√	√	√	√	√
Female connector viewing	√	√	√	√		√
Ribbon fiber connector viewing	√	√	√	√	√	√
"Hot" fiber IR filter			*	*		
Carrying case	√	√	√	√	*	*
Digital zoom				√		
Ruggedized cover					√	√
Built-in Cleaning module					√	√
Two optical modules						√
ConnectorView Plus Pass / Fail software	*	*	*	*	*	*
Integrated Optical Power Meter					*	*

\* Available Option

ISO 9001:2000

Specifications and descriptions are subject to change without prior notice.

überreicht durch:

**Opternus**

Opternus GmbH Optische Spleiss- & Messtechnik

Bahnhofstr. 5  
D-22941 Bargteheide

Tel. +49(0)4532-20 44-0  
Fax +49(0)4532-20 44-25

Büro Süd:

Wäldenbronner Str. 2  
D-73732 Esslingen

Tel. +49(0)711-3 10 59 99-0  
Fax +49(0)711-3 10 59 99-90

E-Mail: info@opternus.de - www.opternus.de - www.opternus-shop.de

©Opternus GmbH  
August 2010